

Roadrunner Food Bank's ANNUAL REPORT 2020-2021

COVID-19 is Continuing to Impact Food Insecurity in New Mexico

When the pandemic initially hit in New Mexico, 20% of the statewide hunger relief network temporarily shut down. In the last year, several have re-opened, but many still do not have the capacity to be open at 100 percent. Roadrunner Food Bank has established several drive-through food distributions to account for temporary partner agency closures, partial agency re-openings and the ongoing unprecedented need in communities we serve.

With New Mexicans still facing the impact of lost wages and food costs on the rise, hunger rates in the state continue to be higher than they were pre-pandemic.



Total Pounds of Food Distributed



In Roadrunner Food Bank's direct service area that includes 16 counties
(see map on page 3)

42,889,789 lbs

Across the entire state
58,958,429 lbs

Tribal communities in direct service area
2,758,176 lbs

Coronavirus Food Assistance Programs (CFAP):

Direct service area
9,272,817 lbs

Across the entire state
15,050,838 lbs
(TEFAP):

19,993,656 lbs

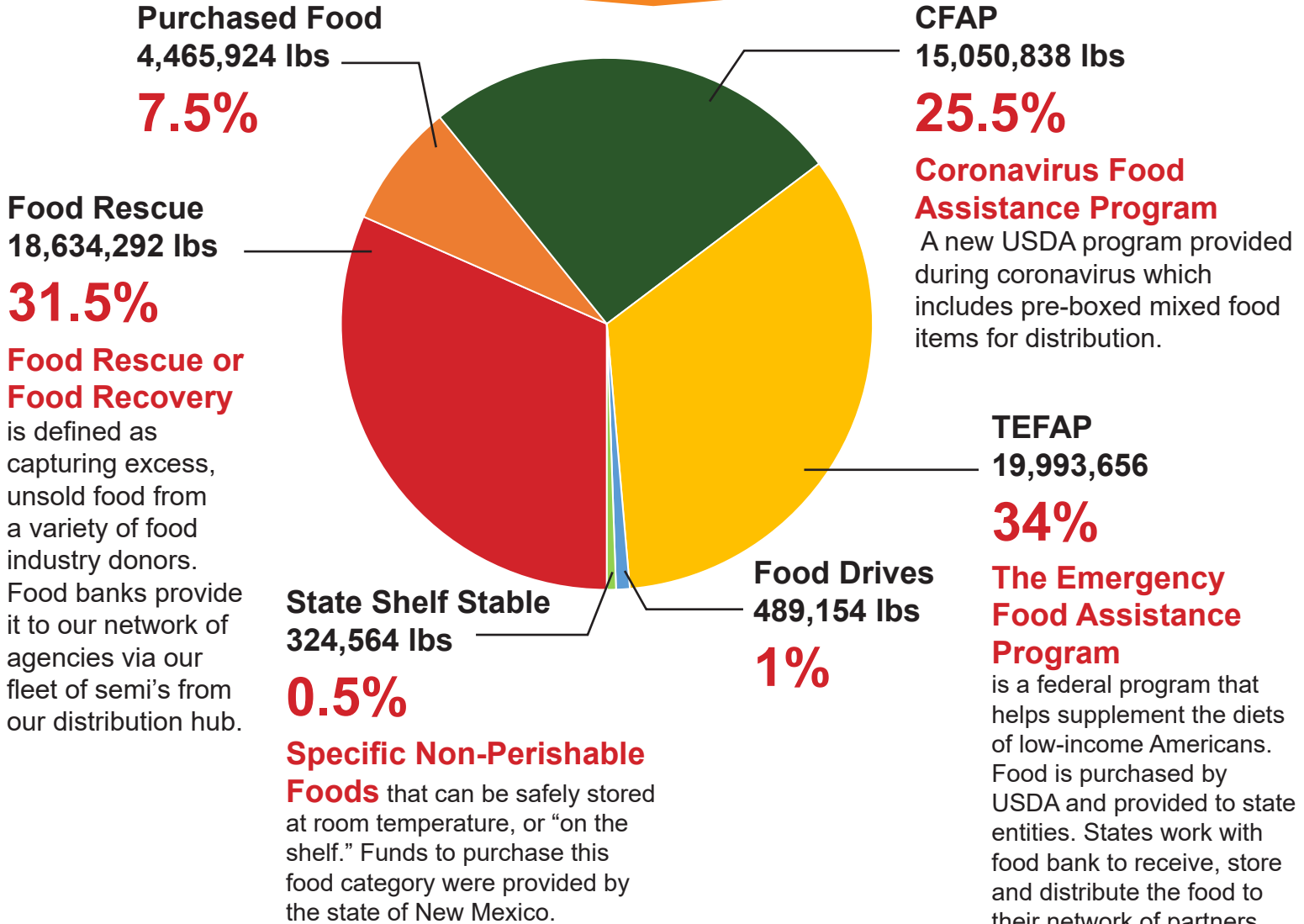


New Mexico Hunger Statistics from *Feeding America's* annual *Map the Meal Gap shows that hunger in New Mexico:**

- Child Food Insecurity Rate: **22%** / Overall Food Insecurity Rate: **14.2%**
- New Mexico's **childhood hunger rate is 22%** compared to the overall national hunger rate in the U.S. which is 10.9%
- Four counties in the state have **child hunger rates over 30%** – Luna, McKinley, Sierra, and Quay
- The report also shows that **hunger exists in every single state and county** in the U.S.
- The average cost of a meal in NM is \$2.95 and the overall meal gap/annual Food budget shortfall is **\$150,238,000.**

* **Map the Meal Gap** Map is Feeding America's annual study that provides data and insights related to local food insecurity and food prices across the United States. Due to delays in the collection of Census Data, **Feeding America's 2021 Map the Meal Gap Study** containing historical estimates has not yet been released. These Map the Meal Gap figures are reflective of 2020 historical estimates of local food insecurity. This study looks at historical estimates related to federal program eligibility, food prices and food spending, local meal costs, food budget shortfall and the meal gap. Together, those data elements make up food insecurity projections in a specific period.

Where does the food come from?



Food Rescue or Food Recovery is defined as capturing excess, unsold food from a variety of food industry donors. Food banks provide it to our network of agencies via our fleet of semi's from our distribution hub.

Specific Non-Perishable Foods that can be safely stored at room temperature, or "on the shelf." Funds to purchase this food category were provided by the state of New Mexico.

Coronavirus Food Assistance Program
A new USDA program provided during coronavirus which includes pre-boxed mixed food items for distribution.

The Emergency Food Assistance Program is a federal program that helps supplement the diets of low-income Americans. Food is purchased by USDA and provided to state entities. States work with food bank to receive, store and distribute the food to their network of partners. USDA secure 100 percent American grown food through the program.



Roadrunner Food Bank Distributed
→ **12,446,123 lbs of produce**

Bringing nutritious food access to New Mexicans in need!

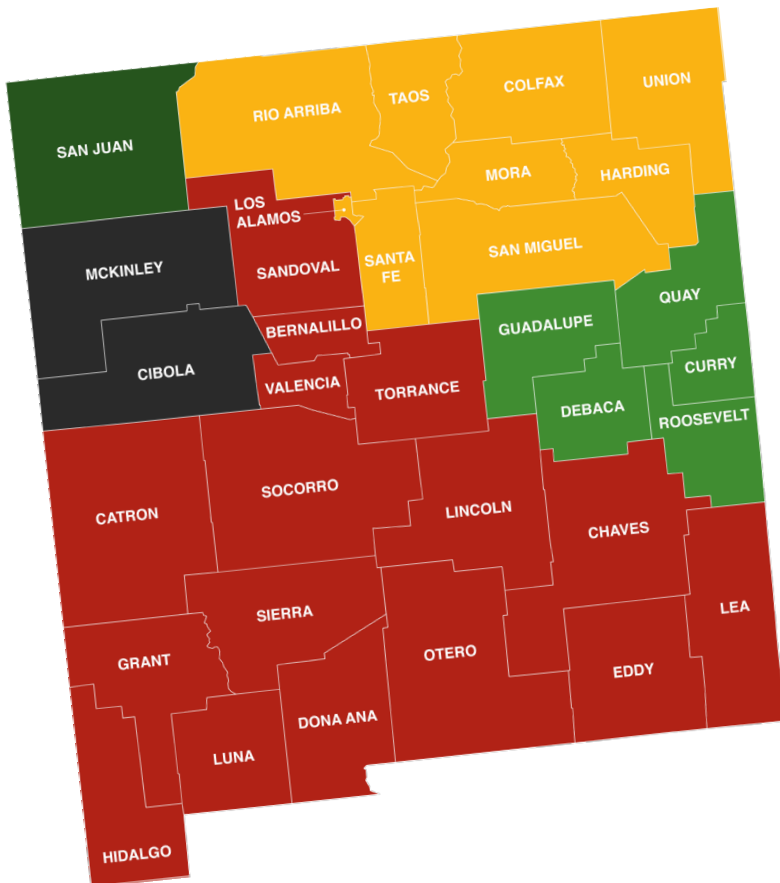
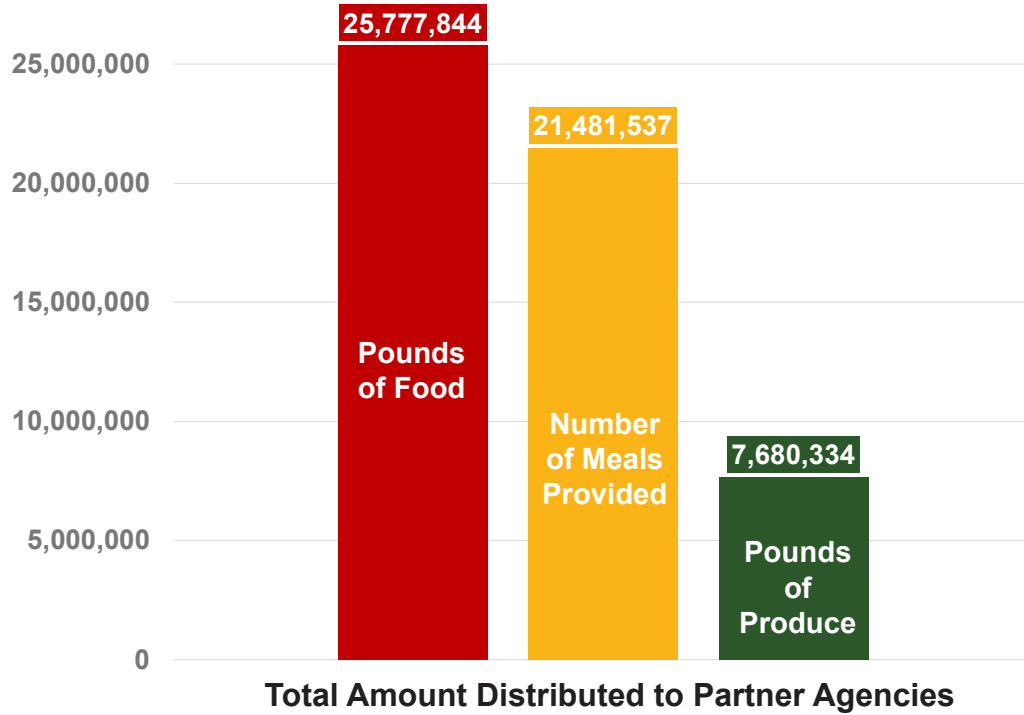
Who do we provide food to?

Traditional Partner Agencies - **140 SITES**



The types of organizations we supply food to as Partner Agencies includes food pantries, soup kitchens, group homes and shelters. These type of distribution locations represent **36%** of the total number of sites we provide food to.

Food Bank data showing the amounts of food, produce and number of meals provided to partner agencies. →



Food Bank Service Areas

Roadrunner Food Bank provides food from their Albuquerque distribution center to:

391 partners in 16 counties

← as shown in the map in red

The remaining 17 counties are served through regional food bank partners located in Clovis, Farmington, Gallup and Santa Fe. Each food bank provides food through many hunger relief partners too.

These Regional Food Banks also receive food that come from our distribution center.



What additional hunger relief programs do we offer?



Childhood Hunger Initiative



Providing food to **low-income children and their families** at school locations. Families receive the food at the school and take it home to prepare as meals.

Total Pounds:	4,601,666
Total Meals Provided:	3,834,722
Total Produce:	799,717
Number of Sites:	79
Counties Served:	14

Health and Wellness Initiative

Data shows that hunger and health go hand in hand. Food insecurity can complicate chronic health issues and low-income individuals often must choose between medical costs and food. In addition, they generally have more trouble finding or affording nutritious food that can help improve their conditions.

Research shows that in New Mexico alone, healthcare costs attributed to food insecure adults exceed \$1,450 per food secure adult every year. **Roadrunner Food Bank's Health and Wellness Initiative** provides access to nutritious food for low-income patients through partner healthcare clinics and our on-site medical referral food pantry.



Healthy Foods Center

This **onsite medical referral food pantry** is located directly within Roadrunner Food Bank's Warehouse. Partner healthcare sites refer patients to the medical referral food pantry. Patients that are experiencing a chronic health issue and hunger at the same time are guaranteed the program for several years.

Number of Households Served: 324 (unique*)
 Seniors over 60: 5,201- (duplicated*); Adults: 6,843 - (duplicated*); Children: 3,055 - (duplicated*)

Total Pounds:	369,521 lbs.
Total Produce Pounds:	230,707 lbs.
Number of Orders Fulfilled:	6,174

Healthy Food Markets



These sites are located at partner healthcare clinics. **Clinics host produce-only distributions** for their patients who have a chronic health issue and are food insecure. These typically occur twice a month at each location.

Number of Households Served: 13,025 (unique*)
 Seniors over 60: 7,545 - (duplicated*); Adults: 13,212 - (duplicated*); Children: 6,849 - (duplicated*)

Total Pounds:	319,310 lbs.
Total Produce Pounds:	319,310 lbs.
Total Number Partners Worked with:	17

*unique means one time service and duplicated means they received the service multiple times

Senior Hunger Initiative



Providing access to nutritious food to **seniors** at senior sites or seniors living in low-income housing.

Total Pounds:	1,012,225
Total Meals Provided:	843,521
Total Produce:	64,336
Number of Sites:	17
Counties Served:	11

Mobile Food Pantry



In March 2020, Roadrunner Food Bank went from a client choice food selection model to adopting the **pre-boxed food model** in response to coronavirus and new public health orders. Since then, our **Mobile Food Pantry Program** has trained several locations and opened various drive through food distribution sites throughout the state. This has been in an effort to create a safer, contact free experience as we continue to navigate the pandemic.

Total Pounds:	10,230,831
Total Meals Provided:	8,525,693
Total Produce:	662,728
Number of Sites:	141
Counties Served:	16

More Programs



AmeriCorps

Public Benefits Outreach Program

A program that helps **low-income New Mexicans** by providing SNAP application assistance. SNAP is a proven way to put additional meals in the homes of struggling families.



Number of Households Served:

- Number of Seniors over 60: **247**
- Number of Adults (18-60): **331**
- Number of Children (under 18): **197**

Number of Households Assisted with Applications for Public Benefits in the Categories Below: **1,326**

SNAP Applications:	923
Low Income Home Energy Assistance Program (LIHEAP):	223
Cash Assistance Applications:	82
Medicaid Applications:	338
Medicare Savings Applications:	149

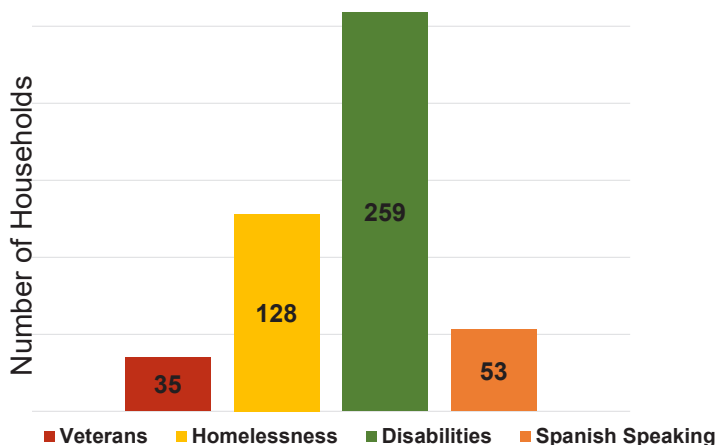
SNAP Data:

SNAP Meals Attributed to Food Bank

Outreach Activities:	811,762
Estimated Value of SNAP Benefits Generated:	\$2,394,703
Estimated Local Economic Impact Generated:	\$3,687,840

Roadrunner has HELP Center volunteers that are specifically trained to assist people with applying for public benefits. They work in a virtual setting, often right from their own home, and help clients over the phone.

Demographics of Households Assisted



SeedCorps Program

SeedCorps is the name of Roadrunner Food Bank's **AmeriCorps program**. AmeriCorps is a network of service programs that engage adults in public service work with the goal of meeting critical needs in various communities. Members commit to a period of time to complete their service (often a year). They are able to serve in a full or part-time capacity and receive a stipend for their service. Our SeedCorps program works closely with the **Serve New Mexico Commission** who administers the program and grants placements and awards to various sites including Roadrunner Food Bank. SeedCorps members focus on providing the food bank and our partner agencies with assistance in nutrition education, capacity building and the running of food distributions. The program had:

37 full term members who completed 26,405 hours of service all together.

The members help provide access to food at several mobile food pantry distributions run in various counties throughout the state over the course of the year.

Total Pounds Distributed:	2,537,613
Total Meals Provided:	2,114,678
Total Number Distributions:	219

Second Chances Job Training Program



Provides job training to those leaving the judicial system or those experiencing long-term unemployment in **two tracks: Warehouse Training Track** and **Commercial Driver's License Track**. The program's intent is to help prevent recidivism and provide opportunities to the interns for a more consistent income source. The pandemic caused many issues for the US Probation Office. Impact on their funding meant fewer placement opportunities in our Second Chances Program during the fiscal year.

There were three individuals who completed the program and **all were hired on as full-time employees** by Roadrunner Food Bank.

Volunteer Program and Board Members



Volunteer Program

Volunteers are the **helping hands that make our work possible**. Their support helps us accomplish our work in providing food to families

and communities across the state.

Roadrunner's staff continues to make it a priority to ensure the health and safety of volunteers who give their time and talents to the organization.



TRAINED IN
COVID-SAFE
PRACTICES

Early on during the pandemic, our organization went through the **NM Safe Certified COVID-Safe Training Program**. It's one additional way that we have made it a priority to operate in the safest manner possible throughout the pandemic.

We continue to adjust volunteer projects inside our warehouse, provide additional training to volunteers, encourage healthy and sanitary practices and have volunteers perform a health screening when they visit.

- **Duplicated Volunteers:** 17,774
- **Unduplicated Volunteers:** 3,296
- **Total Hours:** 37,903
- **Value of Hours*:** \$1,081,752

which represents 18 full-time employees

* Independent Sector's 2021 value of a volunteer hour is \$28.54.

Board Members

Executive Committee

Margie McNett: Chair

Dinah Garcia-Tolley: Vice Chair

Ryan Centerwall: Treasurer

Karen Smoot: Secretary

Janice Lucero: Past Chair

Mag Strittmatter: President and CEO

**“THANK YOU
to our donors, supporters,
and volunteers for making
our work a reality.
Your generosity
makes a difference!”**

Members at Large

Gail Armstrong

Mike Bickel

James Burton

Corrine Carmony

Corey Cruz

Sue Forester-Cox

Douglas Heller

Janice Honeycutt Hering

Patty Keane, MS, RD

Jay Larsen

Purvi Mody

Travis Suazo

Eugene Sun, MD

Financial Summary

Income Statement

Fiscal Year Ending June 30, 2021

Notes

The income statement indicates how revenue is transformed into net income (the result after all revenues and expenses have been accounted for, also known as the "bottom line") during the fiscal year. This document shows the revenues recognized for a one-year fiscal period ending on June 30, 2021. It also reflects the cost and expenses charged against those revenues.

Revenue	June 30, 2021	Expenses	June 30, 2021
Donated Food	\$127,238,799	Program Services	\$140,942,492
Contributions, Grants, and Contracts	\$30,284,872	Administration	\$1,290,766
Program Service Revenue	\$1,399,500	Fundraising	\$1,111,099
Federal Grant Revenue	\$7,369,240	Total Expenditures	\$143,344,357
Other Revenue	\$140,992		
Total Revenue	\$166,433,403	Change in Net Assets before Non-Operating Activities	\$23,089,046
		Realized Gain on Interest Rate Swap	\$234,703
		Change in Net Assets	\$23,323,749

In early 2020, the World Health Organization declared the coronavirus outbreak (COVID-19) a "Public Health Emergency of International Concern" and on March 11, 2020, declared COVID-19 a global pandemic. The impact of COVID-19 since that time has affected Roadrunner Food Bank's operations, its statewide hunger relief network, clients, donors, suppliers, vendors, and other key stakeholders. Responses by public health and governmental authorities to contain and combat the viral outbreak and its spread has adversely affected workforces, economies, and financial markets on a global scale.

The impact on Roadrunner Food Bank's operations due to COVID-19 has been extraordinary. As neighbors and families confronted business closures, lost employment, and economic crises, the food bank was able to elevate its level of support to people we serve and alleviate some of the hardships they faced. Thanks to an outpouring of support from community and government agencies, Roadrunner Food Bank successfully expanded operations to provide significant food assistance and relief. In addition, the food bank received an unprecedented and transformational multimillion-dollar gift in April 2021. This gift permitted Roadrunner Food Bank to pay off a 30-year mortgage debt and establish a quasi-endowment fund. The quasi-endowment has a very specific role in the future needs of the food bank. Its overall use is to strengthen the long-term needs of the food bank and the hunger relief network it supports in New Mexico. This financial statement reflects substantial increases to certain balances and results when compared to previous year's financials. These balances are a direct result of the public's response to assist the food bank since the COVID-19 pandemic began.

Balance Sheet

Fiscal Year Ending June 30, 2021

Notes

The balance sheet gives a snapshot of the financial health of an organization at a particular point in time. An organization's total assets should generally exceed its total liabilities. The types of assets and liabilities must also be considered. For instance, an organization's current assets (cash, receivables, securities, etc.) should be sufficient to cover its current liabilities (payables, deferred revenue, current year loan and note payments).

Assets	June 30, 2021
Cash & Investments	\$22,971,453
Accounts Receivable	\$432,647
Pledges & Grants Receivable	\$1,066,918
Prepaid Expenses	\$48,456
Inventories	\$4,564,492
Capital Assets, net of accumulated depreciation	\$13,343,690
Other Assets (Right-of-Use Assets)	\$123,899
Total Assets	\$42,551,555
Liabilities	June 30, 2021
Accounts Payable & Accrued Expenses	\$1,070,624
Note Payable and Refundable Advance - PPP Loan	\$580,476
Operating & Finance Lease Liabilities	\$96,725
Total Liabilities	\$1,747,825
Net Assets	\$40,803,730

Comments

The vast majority of food bank funds are spent in acquiring, storing, transporting and distributing food. Over 98% of all expenditures (cash & in-kind) are used in the direct delivery of our core services.

Helping Our Neighbors Who Are Experiencing Hunger



OUR MISSION

FEED every hungry person today.

SEED partnerships that build self-sufficiency for tomorrow.

LEAD to achieve our vision of permanently ending hunger in New Mexico.

OUR CORE VALUES

ACCOUNTABILITY that earns the trust of everyone we work with and serve.

INTEGRITY of our words, decisions, and actions

RESPECT for others that we demonstrate through honest, timely, and compassionate communications.

UNITY through TEAMWORK with our partners, supporters, and every member of the food bank community.

PASSION for Roadrunner® Food Bank of New Mexico's mission and the people it supports.

Contact Information



5840 Office Blvd NE
Albuquerque, NM 87109
(505) 247-2052

www.rrfb.org

505 S Main St Suite 149 A
Las Cruces, NM 88001
(575) 523-4390